

Fantozzi

Pino Minafra

MARCIA BURATTINESCA N. 2 (versione da concerto)

Andante (♩ = c. 96)

Ad libitum Tamburo,
poi Cassa e poi Piatti

A On cue

sino alla chiamata

B **C** **D** **E** **F** **G** **H** **I** **J** **K** **L**

f *ff* *mf* *ff* *f* *mf* *f* *p* *pp* *f* *p*

Ad libitum Tamburo, poi Cassa e poi Piatti

Solo Primo e con sordina

♩ = c. 144

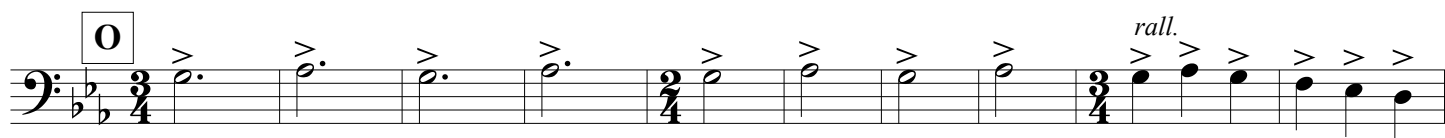
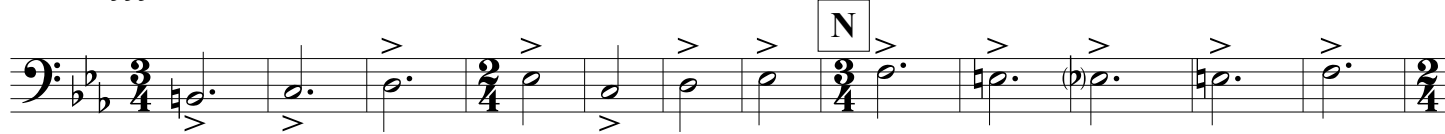
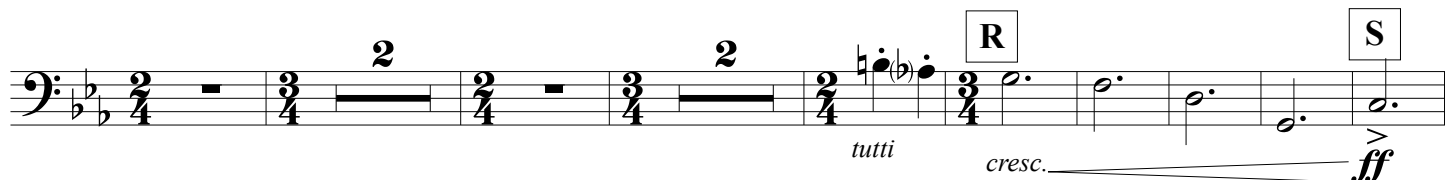


TERRIFICANTE

♩ = c. 168

via sordina

tutti

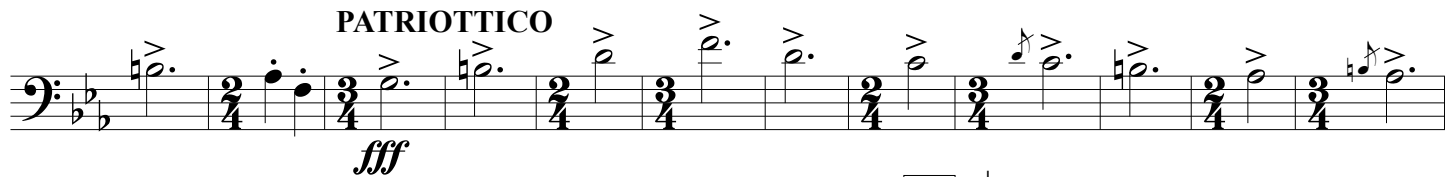
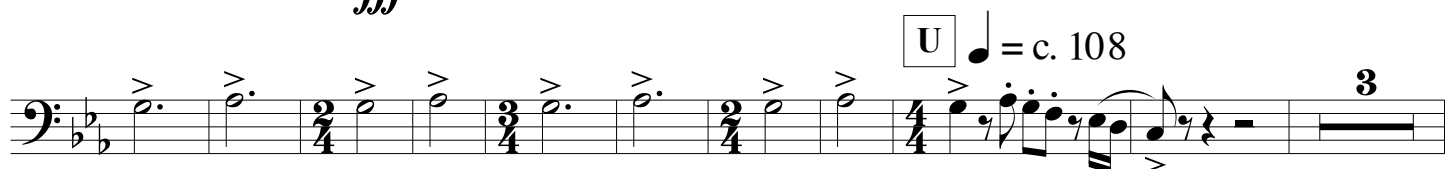
*mf* Solo Primo e con sordina

tutti

cresc.

ff

PATRIOTTICO

*ff*

♩ = c. 108

mf

V W

f

X

ff

Y

Z

AA 4 *mf cresc.*

BB

OPEN

ff 3 *ff*

CC On cue

ff